



RSE CURRICULUM 2020-2021

CHERTSEY HIGH SCHOOL UPDATE TO PARENTS AND CARERS



GOVERNMENT POLICY



- As of September 2020 the new government statutory requirements have made the teaching of Relationship and Health education compulsory in primary and secondary schools across the country. Sex education within the national curriculum of science (including teaching about reproduction in humans) is also compulsory.
- <https://www.gov.uk/government/publications/relationships-education-relationships-and-sex-education-rse-and-health-education>

Relationships Education, Relationships and Sex Education (RSE) and Health Education

Statutory guidance for governing bodies, proprietors, head teachers, principals, senior leadership teams, teachers

WHAT IS RSE?

- We define 'relationships and sex education' to involve the forming and maintenance of family, friendships and more intimate relationships both online and in person with consideration of boundaries and health.
- We believe relationships and sex education is important for our pupils and our school because it supports people, throughout life, to develop safe, fulfilling and healthy relationships, at the appropriate time.



OUR APPROACH

- Our school's ethos for our pupils is underpinned by our Christian principles and values of knowledge; determination and love. This policy fulfils our school ethos by giving students the information to challenge stereotypes, prejudice and discrimination, as well as being able to tackle difficulties life may bring with resilience and an awareness to the wide range of support available to them.
- Our PSHE programme aims to help children to realise the nature and consequences of bullying (including cyber-bullying) as well as developing healthy coping mechanisms which will enable them to build and maintain strong relationships throughout their life.

WE HAVE DEVELOPED A DRAFT POLICY

- This policy can be found on our website
- The policy is currently in draft form. We are asking staff and parents to read through the policy and provide any feedback
- This feedback will help us in developing the final policy document

Chertsey High RSE Policy:

POLICY CONTEXT AND RATIONALE:

This policy covers our school's approach to the teaching of RSE at Key Stage 3 and 4. It was produced by the Head of PSHE through consultation with the Humanities Department and Board of Governors. Consultation took place in the form of a series of meetings in September 2020 in which the policy was discussed. Pupils needs have informed the creation of this policy through data collection using Public Health England and ChiMat, identifying the priority needs of students within the area. These involve road safety, underage drinking, mental health and self-harm. The policy and core focuses will be reviewed in September 2022 with the addition of ongoing student and parent consultation.

POLICY AVAILABILITY:

Parents and carers will be informed about the policy through a letter home. The policy will be made accessible to parents through the school website and via the school office.

POLICY AIMS AND OBJECTIVES:

We define 'relationships and sex education' to involve the forming and maintenance of family, friendships and more intimate relationships both online and in person with consideration of boundaries and health. We believe relationships and sex education is important for our pupils and our school because it supports people, throughout life, to develop safe, fulfilling and healthy relationships, at the appropriate time.

Our school's ethos for our pupils is underpinned by our Christian principles and values of knowledge; determination and love. This policy fulfils our school ethos by giving students the information to challenge stereotypes, prejudice and discrimination, as well as being able to tackle difficulties life may bring with resilience and an awareness to the wide range of support available to them. Our PSHE programme aims to help children to realise the nature and consequences of bullying (including cyber-bullying) as well as developing healthy coping mechanisms which will enable them to build and maintain strong relationships throughout their life.

CREATING A SAFE AND SUPPORTIVE LEARNING ENVIRONMENT:

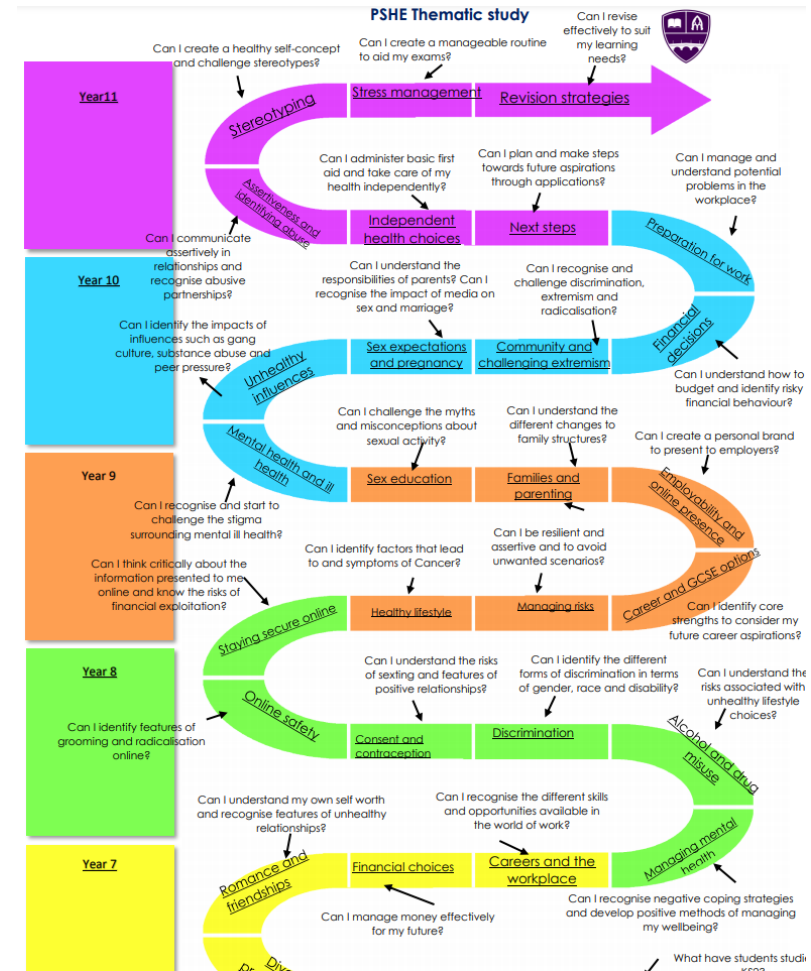
As PSHE education works within pupils' real life experiences, it is essential to establish a safe learning environment. Clear 'ground rules' and a confidentiality policy that is understood by all (adults and children) are important elements of creating this. We will build a safe and supportive learning environment by creating a set of ground rules which will be referred to throughout the year. These involve having the 'right to pass', the right of confidentiality unless the information raises a safeguarding concern and the 'right not to answer personal questions'. Safeguarding post-boxes will also be available around the school where students can communicate privately on certain issues. We will ensure that where pupils indicate that they may be vulnerable and at risk, they will get appropriate support by Heads of Year and the Designated Safeguarding Lead. This policy is informed by the school's safeguarding and child protection policy.

ENTITLEMENT AND EQUALITY OF OPPORTUNITY

We promote the needs and interests of all pupils, irrespective of gender, culture, ability or personal circumstance by creating an inclusive curriculum. Teaching will take into account the age, ability, readiness, and cultural backgrounds of children and those with English as a second language to ensure that all can fully access PSHE education provision. We promote diversity and inclusion will consider all pupils' needs by differentiating learning in lesson time so that everyone is able to progress with their understanding of relationship and sex education. We expect our pupils to

WHEN WILL THE TEACHING OF RSE TAKE PLACE?

- RSE will be taught primarily in term 2 (term 3 for year 9 only) – you will receive a letter regarding which topics will be covered with your child each year.
- This is part of our balanced curriculum which covers the topics of Health and wellbeing, Relationships and Living in the wider world.
- For more details please see our curriculum map and RSE policy.



DELIVERY OF THE CURRICULUM

- Teachers of PSHE are responsible for the teaching of RSE
- These lessons will be delivered once a fortnight for KS3 and once a week for KS4.
- Staff have been trained in the expectations of discussing RSE to create an safe learning environment for students.

RIGHT TO WITHDRAW

- Parents and carers have the right to withdraw their child from aspects of sex education within PSHE up until 3 terms prior to their child's 16th birthday. If you should wish to exercise this right, please do get in touch via email (oneilh@chertseyhighschool.co.uk) as soon as possible so we are able to discuss the options available.

PARENT CONSULTATION QUESTIONNAIRE

- Once you have read through the documents on the website we would be grateful if you could complete the consultation questionnaire
- The responses to this questionnaire will support our development of the final policy and curriculum map
- The questionnaire can be found using the following link:

https://forms.office.com/Pages/ResponsePage.aspx?id=9S0HeedIR024QkmXZXzSp_Pa-DIVq0RKvyJjkjtRjFIUQVpMTE5EVUhEVEVNMzRUOEJBNIEyS0U2UC4u